

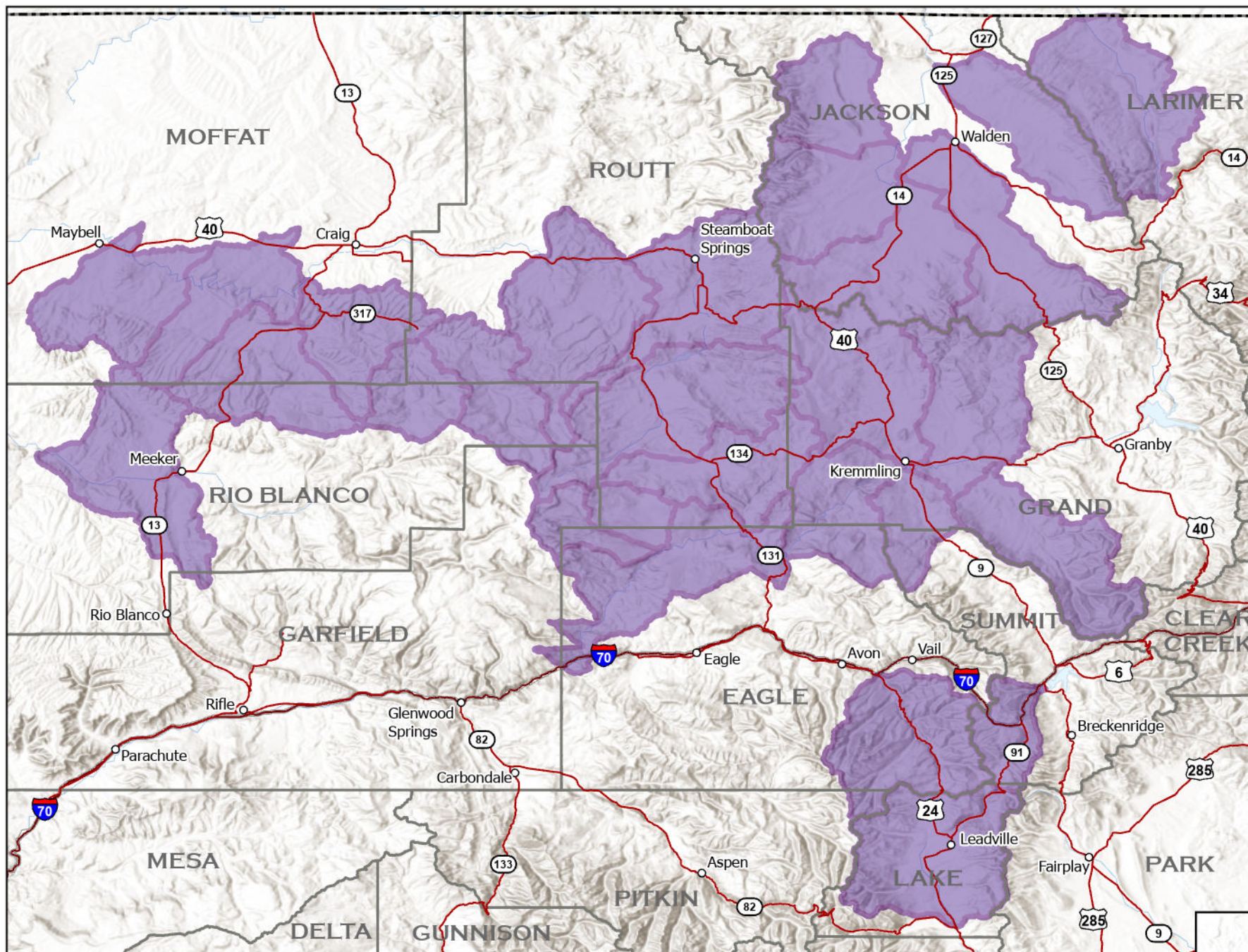



Current as of
December 22, 2024
Published December 23, 2024

**The minimum
mapping unit is the
local watershed.**

This map depicts
watersheds where collared
wolves in Colorado have
been from November 26,
2024 - December 22, 2024.
In order for a watershed to
indicate wolf activity, at
least one GPS position was
recorded within the
boundaries of the
watershed.

**Simply because a
watershed indicates
wolf activity, it does
not mean that a wolf
or wolves are present
throughout the entire
watershed.**






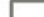

 Wolf activity in watershed

A watershed is a geographic unit that drains water into a specific waterbody. These are also known as Hydrologic Unit Codes (HUC). Information is shared at the HUC 10 level. More can be learned about HUC at <https://water.usgs.gov/GIS/huc.html>.

Collared Gray Wolf Activity November 26, 2024 - December 22, 2024

1:1,250,000



-  Colorado Towns
-  Interstate
-  Highways
-  County Boundary
-  Colorado Boundary

